

FEEL THE DIFFERENCE

PERSONAL
PROFESSIONAL

MEMORABLE



WELCOME

We understand that, whatever the occasion, the stakes are high. So, you want the best experience for your attendees.

When we work together, you can rest assured that your event is in good hands. Our Radisson Meetings concept and the solutions we design for you always keep the three pillars of a successful event at their core: personal, professional and memorable.

PERSONAL

We place you and your needs at the heart of our offer, making sure that we bring your vision to life.

You'll have your own dedicated point of contact for the event who'll work with you as though they're part of your own team. They'll partner with you to coordinate and will ensure everything goes as planned.

PROFESSIONAL

You can be confident that you'll benefit from a great experience and a consistent, superior service. We provide you with everything you need to make your event a success: from modern audio-visual technology and free Wi-Fi to stationery, sufficient power sockets, chargers and adapters.

MEMORABLE

We want to surprise and delight your delegates by creating a memorable experience. When choosing our hotel, you can expect add-ons and personal touches that will help turn a successful meeting or event into a memorable one.



36

MEETING ROOMS

80

MAXIMUM CAPACITY

260

COMFORTABLE HOTEL ROOMS

MEETING FACILITIES

Situated at Stockholm Arlanda Airport, within walking distance to the terminals and access to the entire world. The venue is perfect for productive meetings in an inspirational environment.

AV EQUIPMENT

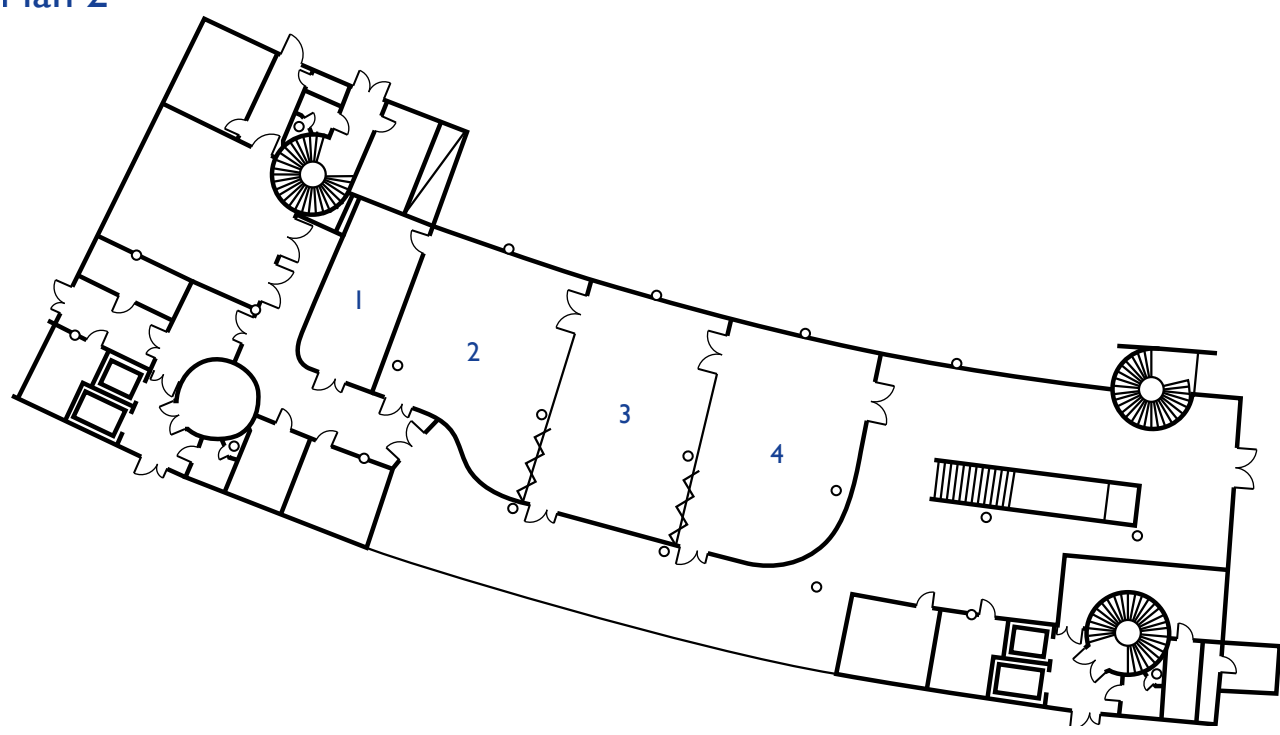
- Loudspeaker and mic - on request
- Conference speaker phone - on request
- Wireless presenter clicker
- Video conferences - on request
- Easy to use screen connectivity - ClickShare in all boardrooms
- Chargers and adapters - on request
- USB Hub

FACILITIES AND AMENITIES

- Common meeting areas
- Natural daylight in almost all meeting rooms
- Whiteboard
- Flipchart
- Printing services
- Stationery
- Lectern - on request
- Team building activities - on request
- Gym

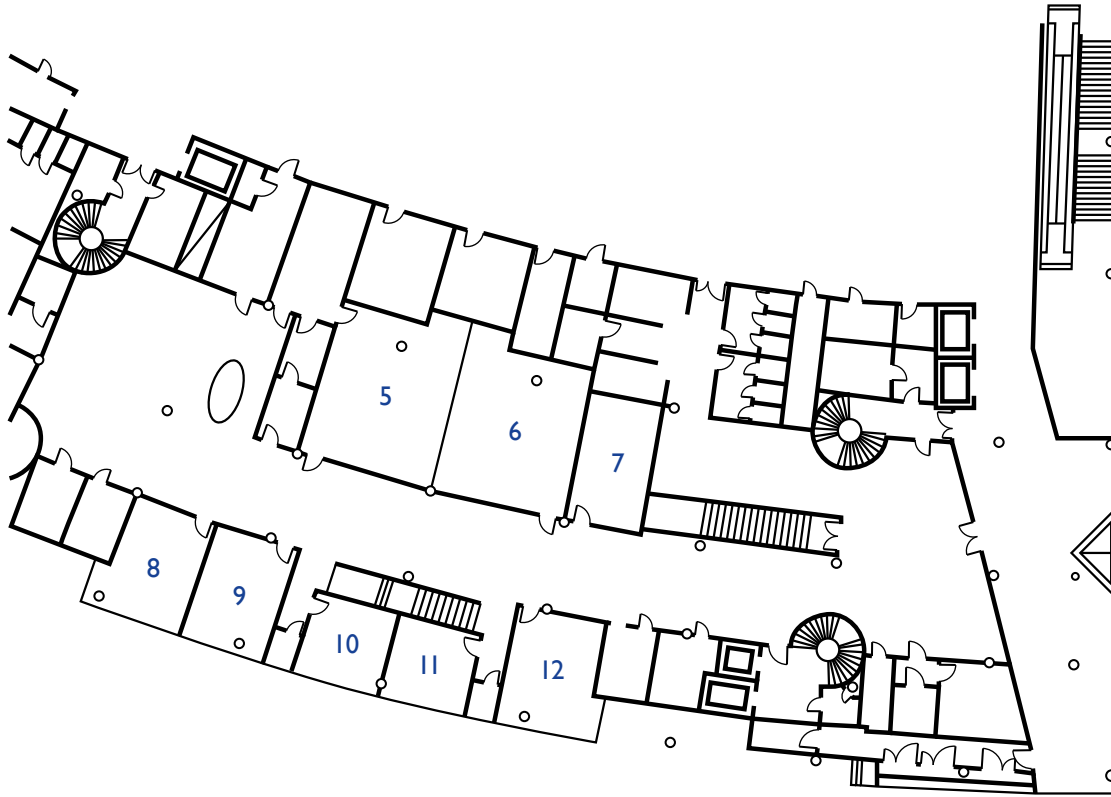


Plan 2



ROOMS	BOARD-ROOM	THEATRE	CLASS-ROOM	U-SHAPE	CABARET	DINNER	CEILING HEIGHT	LENGTH & WIDTH	M2
1 Piper	18	-	-	-	-	-	2,6	8,1 x 4,1	36
2 Scandia	-	72	32	20	30	-	2,6	8,4 x 8,2	83
3 / 4 Antonov / Dreamliner	-	80	44	28	72	-	2,6	11,2 x 7,4	84
2+3+4 Dreamliner, Antonov + Scandia	-	80	80	-	80	80	2,6	-	251
2+3 Antonov + Scandia	-	80	70	36	66	-	2,6	-	167
3+4 Dreamliner + Antonov	-	80	80	36	72	-	2,6	-	168

Plan 3

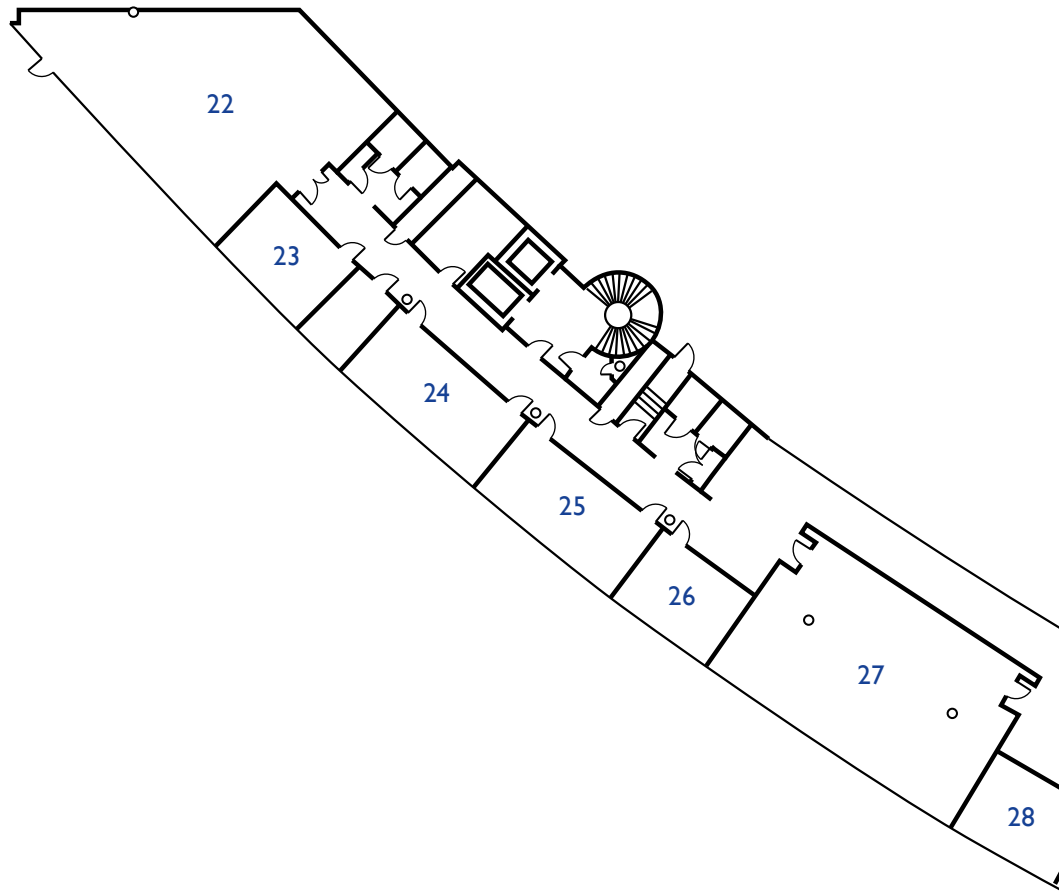


ROOMS	BOARD-ROOM	THEATRE	CLASS-ROOM	U-SHAPE	CABA-RET	DINNER	CEILING HEIGHT	LENGTH & WIDTH	M2
5 Boeing 767	-	37	26	18	20	-	2,6	8,2 x 7,3	60
6 Boeing 737	-	37	26	18	20	-	2,6	8,2 x 7,3	60
5+6 Boeing 747	-	80	60	26	48	-	2,6	8,2 x 14,6	120
7 Mecure	10	-	-	-	-	-	2,6	6,8 x 4	27
8 / 9 Learjet / Falcon	10	-	-	-	-	-	2,6	5,9 x 4,5	26
10 / 11 Gulfstream / Jetstream	6	-	-	-	-	-	2,6	4 x 4,5	18
12 Concorde	-	-	-	12	-	-	2,6	5,9 x 4,7	27
13 McDonnell	-	26	18	16	-	-	2,6	6,6 x 5,6	37
14 Douglas	-	26	18	16	-	-	2,6	6,6 x 5,6	37

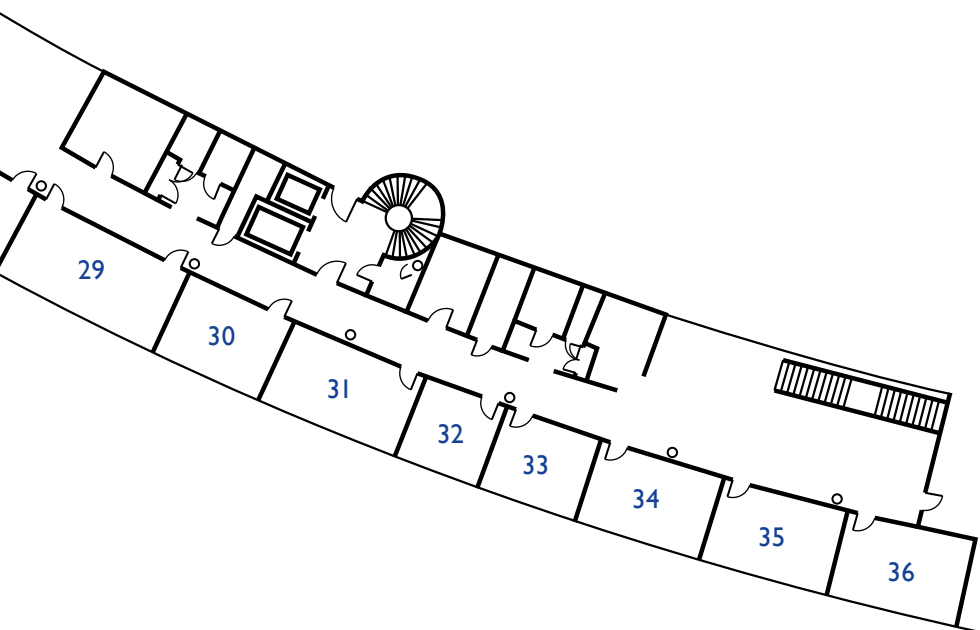


ROOMS	BOARD-ROOM	THEATRE	CLASS-ROOM	U-SHAPE	CABA-RET	DINNER	CEILING HEIGHT	LENGTH & WIDTH	M2
13+14 McDonnell + Douglas	-	70	36	26	-	-	2,6	6,5 x 11,2	73
15 Metropolitan	-	20	12	12	-	-	2,6	6,6 x 4,8	31
15+16 Metropolitan + Airbus	-	59	32	20	-	-	2,6	6,6 x 9,6	63
16 Airbus	-	20	12	12	-	-	2,6	6,6 x 4,8	31
17 Saab 200	-	-	-	12	-	-	2,6	5,9 x 4,7	27
18 / 19 Trident / Tristar	6	-	-	-	-	-	2,6	4 x 4,5	18
20 Lockheed	-	-	-	12	-	-	2,6	5,9 x 4,7	27
21 Electra	10	-	-	-	-	-	2,6	5,9 x 4,5	26

Plan 4



ROOMS	BOARD-ROOM	THEATRE	CLASS-ROOM	U-SHAPE	CABA-RET	DINNER	CEILING HEIGHT	LENGTH & WIDTH	M2
22 Albatross	24	53	22	16	-	80	2,6	15 x 9,7	106
23 Eclipse	8	-	-	-	-	-	2,6	5 x 3,5	17
24 / 25 Global Express / Casa	16	-	-	-	-	-	2,6	7,6 x 3,5	26
26 Challenger	8	-	-	-	-	-	2,6	5 x 3,5	17
27 Hercules	-	60	24	18	18	80	2,6	12 x 7,3	88
28 Canadair	8	-	-	-	-	-	2,6	5 x 3,5	17
29 Avanti	16	-	-	-	-	-	2,6	7,6 x 3,5	26



ROOMS	BOARD-ROOM	THEATRE	CLASS-ROOM	U-SHAPE	CABA-RET	DINNER	CEILING HEIGHT	LENGTH & WIDTH	M2
30 Bellanca	8	-	-	-	-	-	2,6	5 x 3,5	17
31 BAE146	10	-	-	-	-	-	2,6	6,5 x 3,5	22
32 Citation	4	-	-	-	-	-	2,6	3,9 x 3,5	13
33 Jetstar	4	-	-	-	-	-	2,6	3,5 x 3,5	12
34 / 35 / 36 Comet / Tupolev / Beech	10	-	-	-	-	-	2,6	5,9 x 3,5	20,6
550 (in hotel)	10	-	-	-	-	-	-	-	30

EVERYTHING YOU NEED UNDER ONE ROOF

PACKAGES

To save you time and make your life easier, we've developed a range of ready-made packages and solutions. If you have more specific needs, our talented team can also design for you customized solutions.

- Meal packages
- Day conference
- Social events

MENUS

Our delicious menus for meetings and conferences will keep your delegates refreshed and energized.

- Healthy food options
- Energy snacks
- Mingle food

GUEST ROOMS

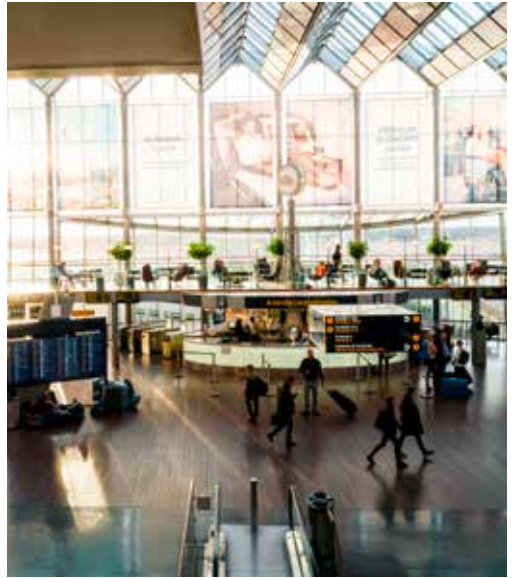
At Radisson Blu we focus on those things that matter most to business travelers. We make sure our guests have everything they need for a comfortable stay.

- 260 comfortable guest rooms
- Free high-speed Internet
- Tea and coffee facilities
- Room service
- Walking distance to airport terminals

RESTAURANT & BARS

Our restaurant Horizon tempts guests with brasserie-inspired cuisine and view towards the runway. Dine in a bright, open setting and relaxed atmosphere.

- Fantastic view towards the runway
- Breakfast buffet from 04:30 every morning
- Open every day



RADISSON
REWARDS™
FOR BUSINESS

Everyone deserves a little extra with each booking.
That's why we believe in a valuable loyalty program.

As a member of Radisson Rewards for Business and someone who books meetings and events you can earn 5 points per U.S. dollar spent at Radisson Hotel Group brands worldwide at any of our 1,100+ participating hotels worldwide, including Radisson Collection, Radisson Blu®, Radisson®, Radisson RED, Park Plaza®, Park Inn® by Radisson, and Country Inn & Suites® by Radisson.

Join Radisson Rewards for Business today and start collecting points, free nights, gift cards, airline miles and much more.

www.radissonhotels.com/rewards/forbusiness



LOCATION

BY TRAIN

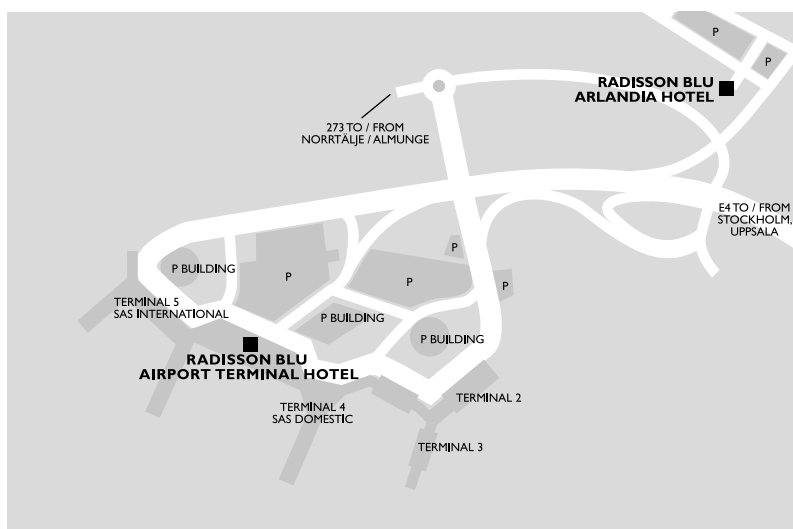
Arlanda Central Station – 75 meters

BY PLANE

Arlanda Airport - 150 meters

PARKING

Several parking garages and outdoor parking available for a fee.



Radisson Blu Airport Terminal Hotel, Stockholm-Arlanda Airport

Pelargången 1, 190 45 Stockholm-Arlanda, Sweden

T: +46 8 506 740 00

meeting.arlanda.stockholm@radissonblu.com

radissonhotels.com



RADISSON
REWARDS

RADISSONHOTELS.COM

RADISSON
MEETINGS